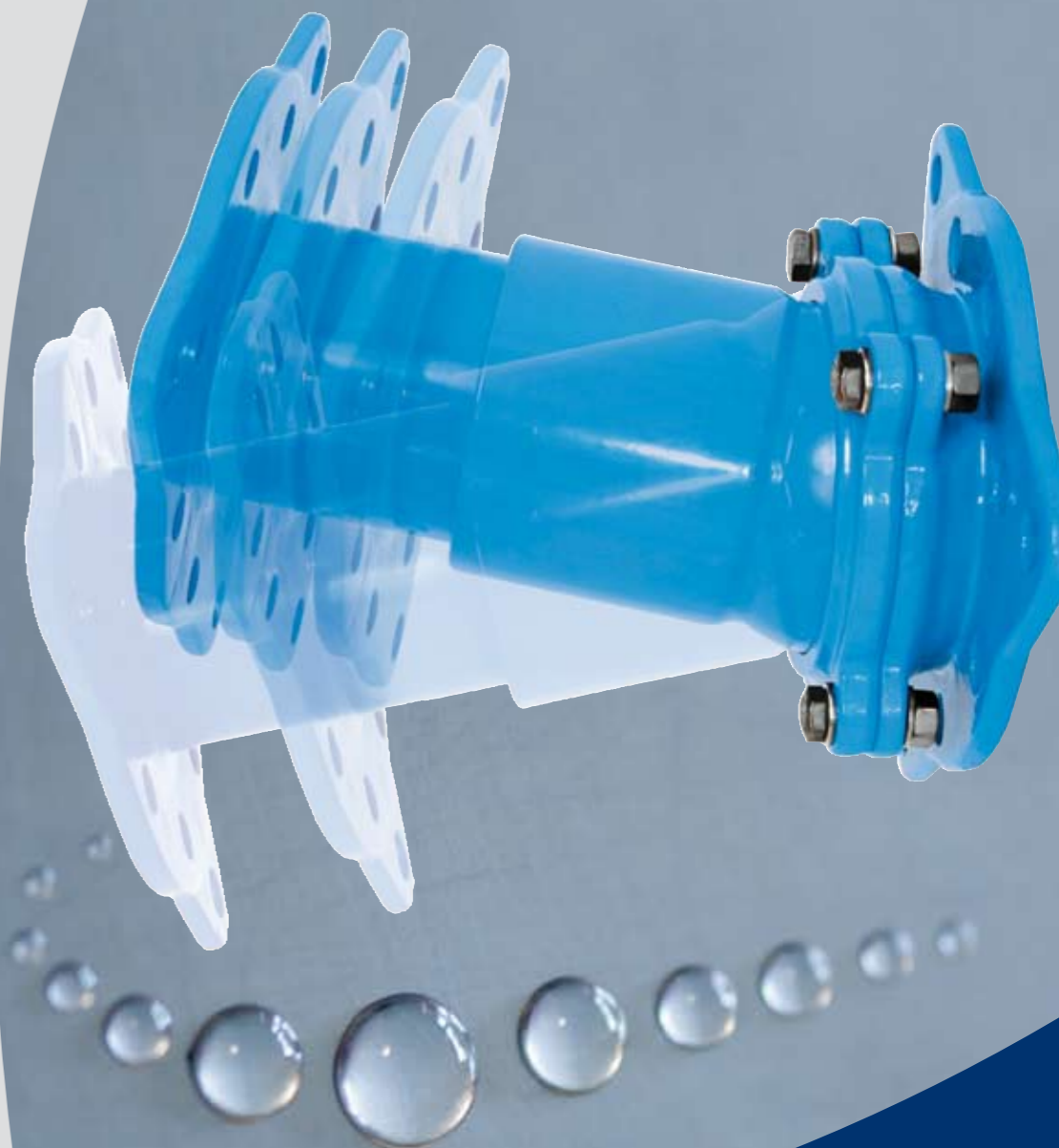


hawle



HAWLE-VARIO



Imbema Denso B.V.  
Nijverheidsweg 5-7  
Postbus 160  
NL-2000 AD Haarlem  
Tel.: +31 (0)23-517 24 24  
Fax: +31 (0)23-531 74 33  
K.v.K.nr.: 34037222  
E-mail: [info@imbemadenso.nl](mailto:info@imbemadenso.nl)  
[www.imbemadenso.nl](http://www.imbemadenso.nl)

Een onderneming van de Imbema Groep.



015.200/08.05E





HAWLE-VARIO

THE INNOVATIVE FLEXIBLE FITTING

We all know the problems that may arise after dismantling an old valve or a cross connection because of decreasing tension and subsiding of the pipeline. As it is often impossible to close the gap by means of standard fittings, time-consuming makeshift arrangements will be used.

The perfect answer to this problem is the latest innovation developed by Hawle - the HAWLE-VARIO.

PRODUCT BENEFITS

HAWLE-VARIO is a flanged **telescopic fitting with integral ball-and-socket joint**, permitting bending to all sides **up to 10 degrees**.

DESIGN FEATURES

HAWLE-VARIO closes each gap with a **bending range of up to 10 degrees**. It is infinitely adjustable via a telescopic mechanism, e.g. for DN 100 short from 150 to 216 millimetres, and/or for the long version from 216 to 350 millimetres.

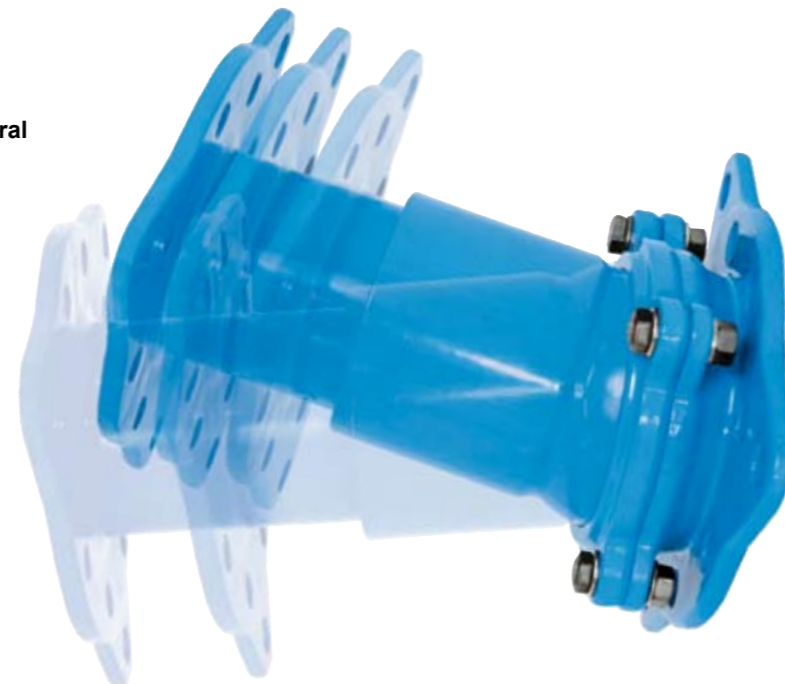
All components of the HAWLE-VARIO are **100% GSK epoxy powder coated** and made of corrosion-free materials.

The HAWLE-VARIO is suitable for potable water pipelines up to an operating pressure of 16 bar.

TENSION LOCK

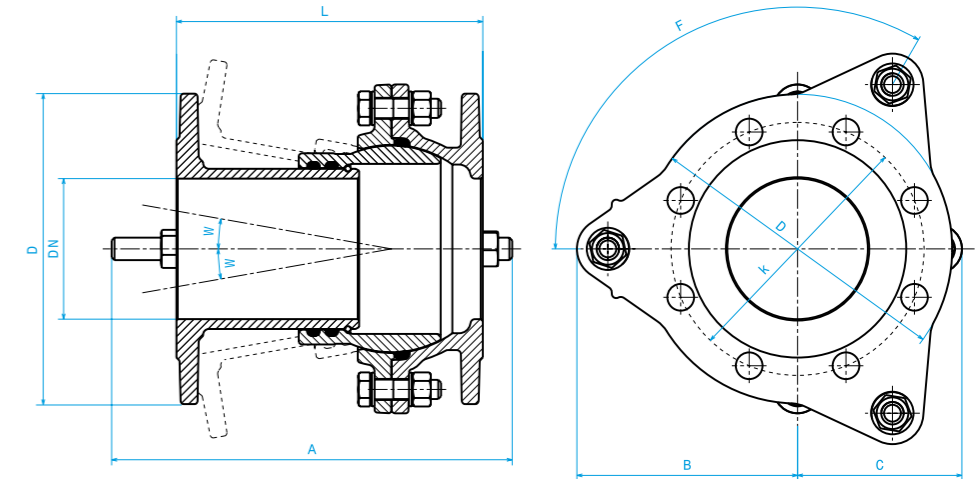


By means of the **tension lock assembly** the HAWLE-VARIO can be **fixed in the installed position**. We recommend to apply tension locks in case of installation in end position, in plants and if the connected pipes may be subjected to geodesic tensile forces.



TECHNICAL DATA

Version short **Cat. No. 8010**  
Version long **Cat. No. 8011**



Art. No.	DN	Version	Adjusting range L in mm	A	B	C	D	F	k	Weight/kg	Angle W
MFV000300020	50	short	150-207	285	212	87	165	3x120°	125	8,9	0-10°
MFV000300030	50	long	207-323	415	212	87	165	3x120°	125	10,2	0-10°
MFV000390020	80	short	150-214	285	247	107	200	3x120°	160	12,9	0-10°
MFV000390030	80	long	214-344	415	247	107	200	3x120°	160	15,2	0-10°
MFV000440020	100	short	150-216	285	267	117	220	3x120°	180	14,8	0-10°
MFV000440030	100	long	216-350	415	267	117	220	3x120°	180	17,3	0-10°
MFV000490020	150	short	175-250	330	380	190	285	4x90°	240	25,4	0-10°
MFV000490030	150	long	250-408	480	380	190	285	4x90°	240	29,3	0-10°

DESCRIPTION OF MATERIAL

All parts made of ductile iron EN-GJS-400/500-18 acc. to EN 1563 (GGG 400 - DIN 1693). GSK epoxy powder coated inside and outside acc. to DIN 30677-T2, subject to DIN 3476, as well as all quality and testing provisions acc. to RAL Quality Mark 662 (GSK - The Quality Association for Heavy Duty Corrosion Protection).

Locking ring, bolts, nuts and washers of stainless steel A2.

O-rings of elastomer (suitable for potable water).

ACCESSORIES

TENSION LOCK ASSEMBLY FOR VERSIONS SHORT AND LONG

**Cat. No. 8009**  
Consisting of rounded washer, ball cups, nuts and tension lock bars of stainless steel A2.



Art. No.	Suitable for DN	Version
HSMF00390020	50, 80, 100	short
HSMF00390030	50, 80, 100	long
HSMF00490020	150	short
HSMF00490030	150	long